

Irene Kneeland, IllustraVisions
 508-865-2427 –Office,
 508-277-1517 – Cell
info@illustravisions.com
www.illustravisions.com



Take the guesswork out of your workflow.

Are you are drawing/designing your plans in CAD, but still measuring by hand? Do you find yourself returning to the job site to re-measure conflicting data or to add the ones you've missed? Been there, done that? There is a better way.

Let us scan your existing structure in 3D with the industry standard Leica BLK360 laser scanner to provide you an accurate point cloud model. Everything visible can be captured and is measurable, minimizing the need to return to the job site.

We can provide multiple types of CAD friendly files: rcp, e57, PTS, PTG and PTX. You can then use the point cloud as an underlay to trace and measure in your native CAD software. No more ladders, no more forensic measurement deduction and second guessing.

What do you need?



AND / OR

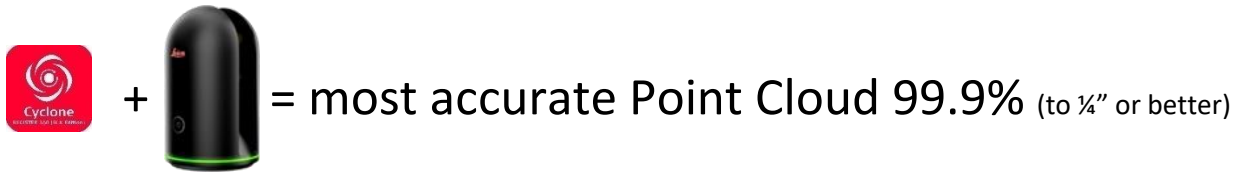


The Cyclone Register 360 workflow or Matterport workflow or both?

IllustraVisions can provide multiple options to suit your needs. We can work with or without virtual tours, and if you need both workflows, we can do that too.

	WORKFLOW: BLK360/Cyclone Register 360 only	WORKFLOW: BLK360/Matterport only	WORKFLOW: Pro2 Infrared/Matterport only	WORKFLOW: BLK360/Cyclone Register 360, then Matterport
Processing Software				
Point Cloud Accuracy	99.9%	99%	95%	99.9%
Thermal IR Images	✓ Taken within Cyclone	✗	✗	✓ Taken within Cyclone
Online Virtual Tour	✗	✓	✓	✓
Still Photos	✓ Taken within ReCap	✓ Taken within Matterport	✓ Taken within Matterport	✓ Taken within Matterport
360 Photos	✗	✓ Taken within Matterport	✓ Taken within Matterport	✓ Taken within Matterport
Simple Floor Plans	✓	✓	✓	✓

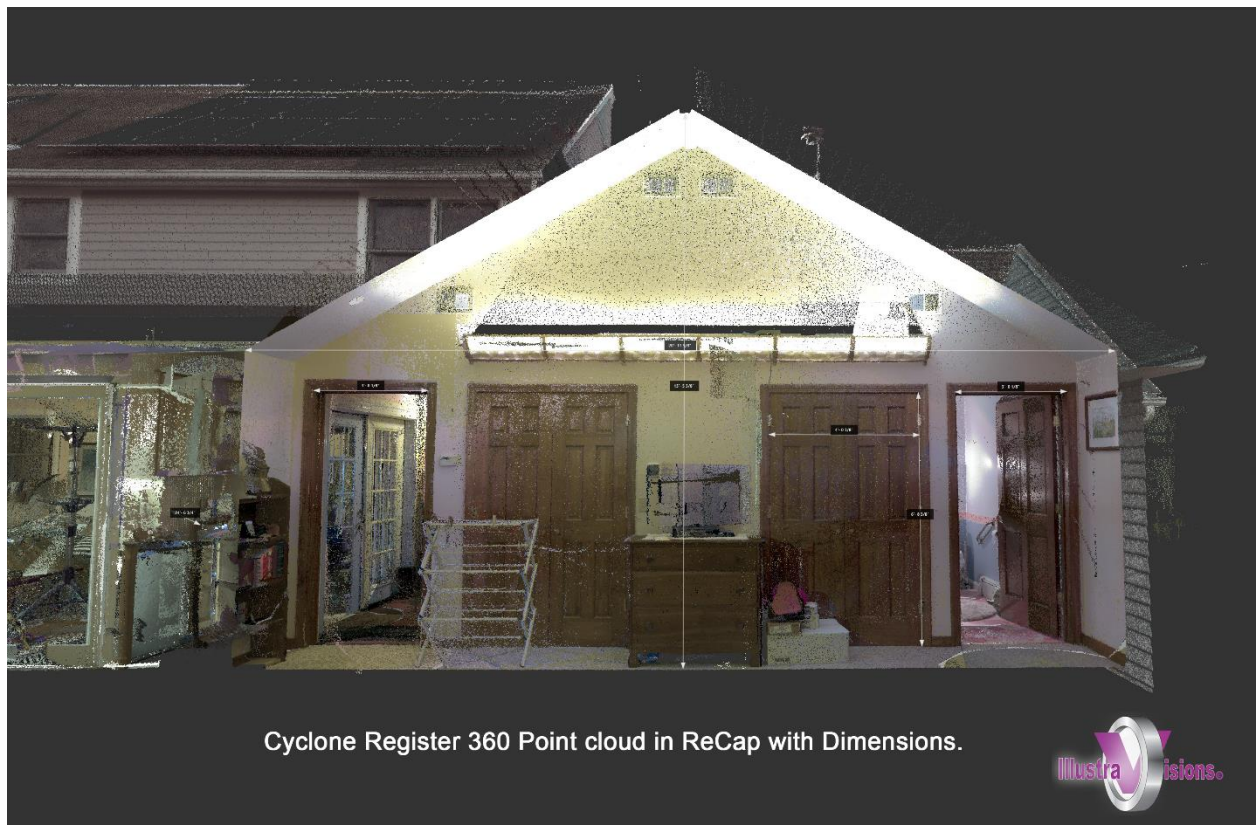
Cyclone Register 360 (BLK edition) with Leica BK360

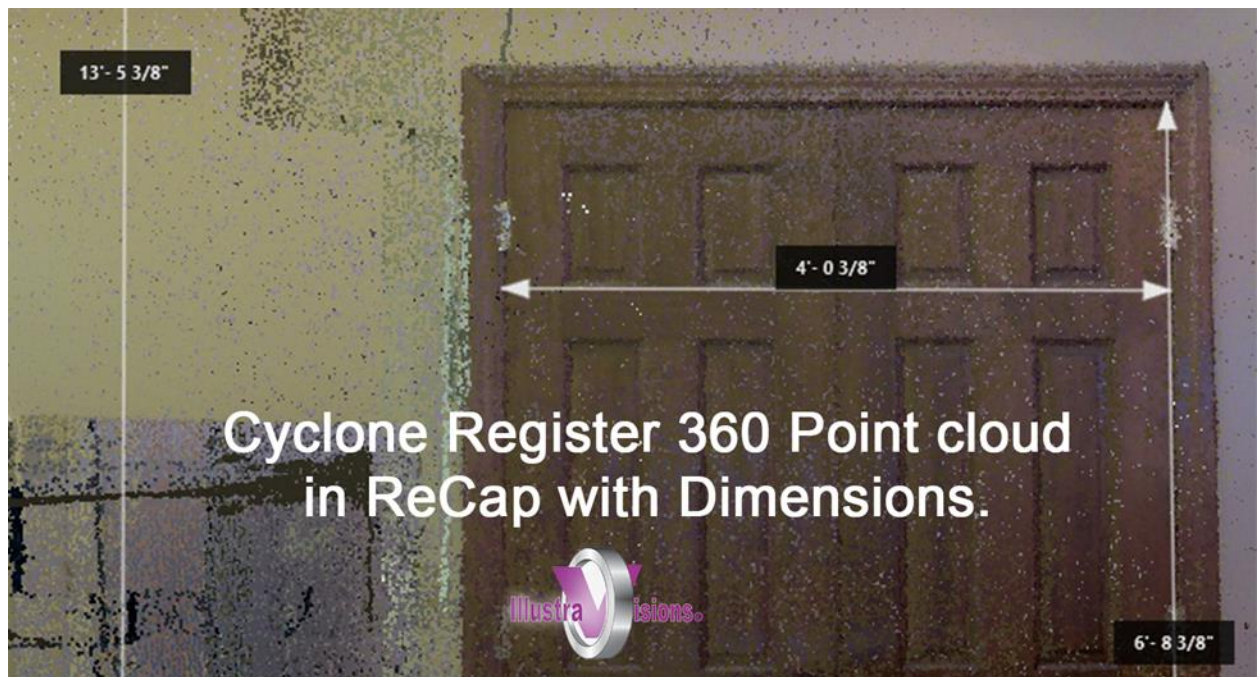


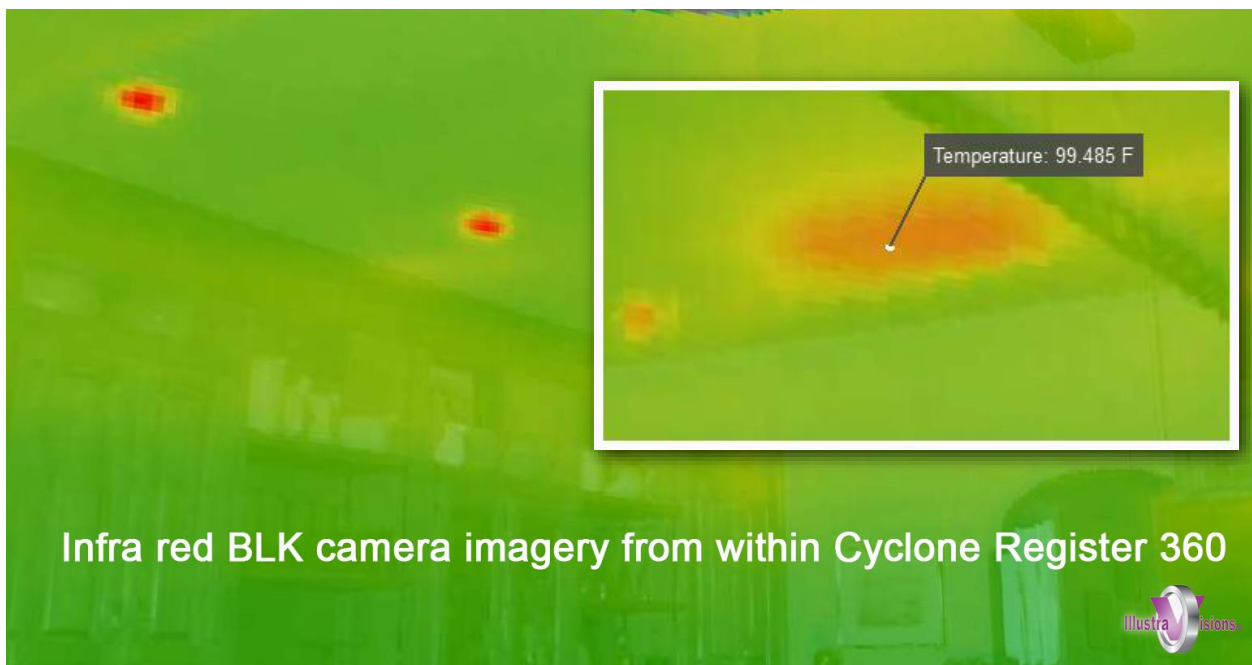
We can capture your as-built structure in the Cyclone Field 360 application, then clean up and optimize the point cloud so that you as the architect or CAD specialist can use the point cloud as an underlay for tracing and measuring. Your CAD point cloud tools like slice tools, limit boxes and more will allow you to glean all the data necessary for plans, elevations, sections, reflected ceiling plans and more. Thermal image information is accessible from the camera through this method. Export file formats: rcp, e57, PTS, PTG and PTX.

[Watch the 50 seconds video –click here](#)

(Point clouds below shown in Autodesk ReCap with limit box and measurements)

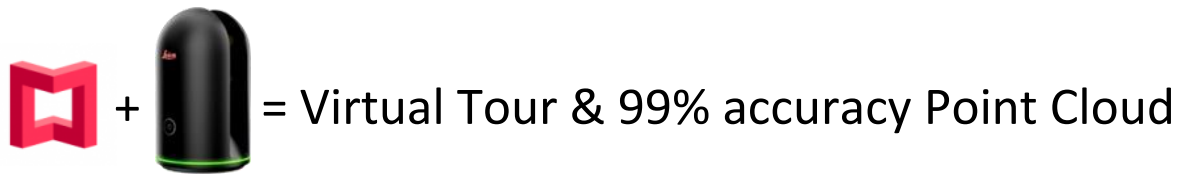






The Leica BLK360 also has a thermal camera, and when used with the Cyclone Field capture application, can reveal hotspots and spot temperature measurements can be noted visually.

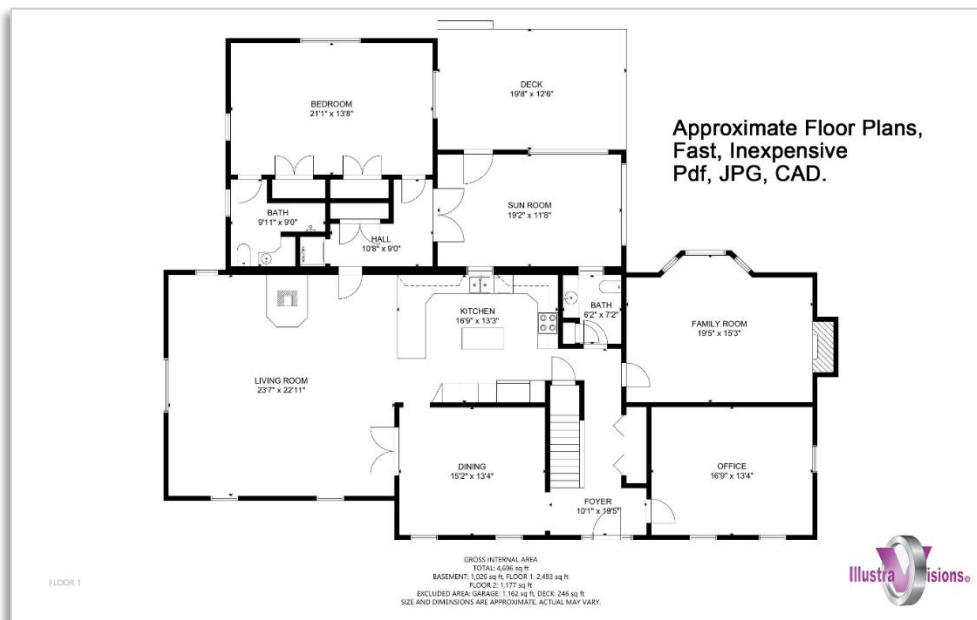
Matterport Virtual Tours with the Leica BLK360



The Leica BLK 360 captured with the Matterport application produces an easily sharable/online hosted 3D virtual tour link to communicate with subs and team members.

Think of it as “Google Street” for the House. Home owners do not need to schedule site visits. Tours can be password protected for privacy. The .xyz point cloud that comes from this model can be converted and used in CAD for measurements and is great for a structure that will be gutted and remodeled. Turn around is within a day or two, and inexpensive, simple pdf and/or CAD floorplans can be purchased to jump start your design process. These plans are typically available in under a week.

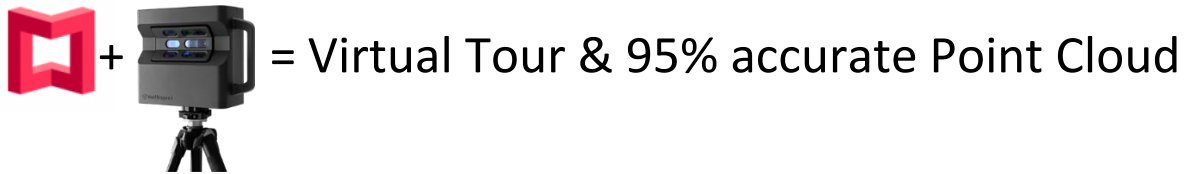




[View a 110K sf. Commercial Matterport Space](#)

If you need an interim, pre-sheetrocked virtual tour, we can capture that too with either tech (see Pro2 information below). Your clients can keep those photos for future reference as well... very handy for locating MEP after the finishes are in place. [See a sample of a 360 Photo here.](#)

Matterport Virtual Tours with the Pro2 Infra-red



We can also use our cost effective Matterport infra-red camera to provide virtual tours when approximate 95% accurate dimensions are acceptable. Both versions of virtual tours are great tools for estimates from subs who can see existing conditions and measure virtually for apples-to-apples quotes.

MATTERPORT VIRTUAL TOURS

More immersive than photos; more interactive than video.

These virtual tours give viewers the sense of really being there from the convenience of a computer or mobile device. With our Matterport Pro 2 camera, we can scan roughly 1,000-1,500 square feet in an hour and the space links are typically available online in 24 to 48 hours. If desired, there is much more interactivity that can be embedded to a virtual tour with pop-up/clickable call-out tags in the 3D space, pop-up explainer videos, and URL links. Although the Matterport Virtual Tours exist only online, the virtual tours can be leveraged for photos & interactive 360 photos and walking tour videos for social media.

What does a Matterport Pro2 Camera look like, how does it work? This little video shows you the infra-red that we normally don't see. [\(Click here to watch.\)](#) It is capturing photo and distance data each time it pauses. This all gets stitched together on Matterport's Cloud.

[See samples of our Matterport virtual tours.](#)

RESIDENTIAL, COMMERCIAL, RENTAL

Pricing for this service depends largely on square footage, and also the desired level of interactivity once the virtual tour is public. The smallest, base price is \$219, but please call so we can explore your project together to define your needs. See the virtual tours in our portfolio.

Let clients or potential customers "be there." Make it easy for them to visualize your space with virtual reality. Please call for a quote on your next project.

Utilizing both technologies for the best of both workflows.



Once the BLK360 Laser scans are captured for Cyclone, they still can be used in Matterport for creating the Virtual tour, and we can supplement with the Pro2 for more attractive imagery.

[Watch the 40 seconds video –click here.](#)